

We have reached the end of an incredibly busy and purposeful first half of the Spring Term!

This week, we joined schools across the country to mark **Children's Mental Health Week**. Our focus has been on the theme of 'This is My Place', which highlights the vital importance of belonging. In our special assemblies and class-based activities, the children have been reflecting on what makes Wymondley 'their place'. It has been heartening to hear them speak so articulately about how they look out for one another and ensure everyone feels welcome and included here.



On Tuesday, we celebrated **Safer Internet Day**. This year's theme encouraged us to look at the rapidly evolving world of Artificial Intelligence (AI). The children engaged in discussions about being safe and responsible users of technology, learning to navigate AI tools with a critical eye. We talked about how, while technology is a brilliant tool, it can never replace our own human creativity and ingenuity.



Thank you to all the parents and carers who attended our **Parents' Evenings** on Wednesday and Thursday. It was wonderful to see such a high turnout and to have the opportunity to share the fantastic progress the children are making. These conversations are a vital part of the partnership between home and school, and we truly value your continued support and engagement.

Today, the staff and governors hosted a special lunch for **Meghan Brown**, who stepped down from our Governing Body in November.

Meghan has given many years of dedicated service to Wymondley JMI, providing invaluable support and guidance.



Today was a lovely opportunity for us to say a formal 'thank you' for her commitment and to celebrate everything she has helped us achieve. We wish her the very best for the future.

This evening, our **football team** is playing St Ippolyts at home. They have been doing exceptionally well in the league recently, showing great teamwork and resilience on the pitch. We wish them the very best of luck for the match—you are more than welcome to stay and watch with a hot chocolate and some treats from the **pop-up tuck shop**, courtesy of the **Friends of Wymondley**.



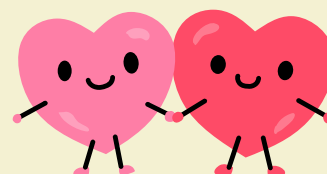
School closes today for the **half-term break**. I would like to thank our incredible staff for their hard work and our families for your ongoing support. Whether you are heading off on an adventure or enjoying a quiet week at home, I hope you have a restful and happy break.



We look forward to welcoming the children back on **Monday 23rd February**.



Mrs Chadwick



Regular Reminders

We have a **pre-loved uniform** rail available in the school library that anyone can utilise free of charge however if you would like to make a donation, please use the QR code found on the rails.

Our uniform policy can be found on our website [HERE](#)



As per the national guidance, please ensure that if your child has suffered from any aspect of **vomiting or diarrhoea** that they stay away from school for at least **48 hours** from the last episode.

Should I keep my child off school?

Yes Until...

- Chickens: at least 7 days from the onset of the rash and until all lesions have crusted over.
- Diarrhoea and Vomiting: 48 hours after their last episode.
- Cold and Flu-like Illness (including COVID-19): they no longer have a high temperature and have had enough to eat/drink, follow the COVID-19 guidance if it is a respiratory infection.
- Headache: their ears have cooled and healed, or 48 hours after they started antibiotics.
- Measles: 4 days after the rash has appeared.
- Mumps: 5 days after the swelling started.
- Skin Lesions: they've had their first treatment.
- Sore Throat: 24 hours after they started taking antibiotics.
- Whooping Cough: 48 hours after they started taking antibiotics.

No but make sure you let your school or nursery know about...

- Rhino, viral and swine: 48 hours after they started taking antibiotics.
- Scarlet fever: 24 hours after they started taking antibiotics.
- Scarlet fever: 24 hours after they started taking antibiotics.
- Scarlet fever: 24 hours after they started taking antibiotics.

Advice and guidance
 To find out more, search for health protection in schools or scan the QR code or visit <https://rpsa.dh.gov.uk>

As our **school lunches** are cooked offsite, we have to provide our meal registers daily by 9:30am. If your child arrives after this time, please can you provide a packed lunch. Click [HERE](#) for the menu

HCL Winter Menu 25-26

Week 8: 25 Nov, 26 Nov, 27 Nov, 28 Nov, 29 Nov, 30 Nov, 1 Dec

	MONDAY	TUESDAY	WEDNESDAY	THURSDAY	FRIDAY
MAIN MENU 1	Beef Burger	Chicken Pie & Bread	Beef Stroganoff with Spaghetti & Gravy	Spiced Chicken with Wild Rice & Beans	Hot Fish Finger
MAIN MENU 2	Pasta & Tomato Sauce	Roast Beef with Yorkshire Pudding	Roast Chicken with Potatoes & Gravy	Mac 'n' Cheese	Margherita Pizza
SOUP OPTION	Chicken & Potato	Chicken & Potato	Chicken & Potato	Chicken & Potato	Chicken & Potato
VEGETARIAN	Spiced Chicken with Wild Rice & Beans	Spiced Chicken with Wild Rice & Beans	Spiced Chicken with Wild Rice & Beans	Spiced Chicken with Wild Rice & Beans	Spiced Chicken with Wild Rice & Beans

Vegetarian and primary of adults are served daily. *No Vegetarian. No 9:30am



This month, we are collecting the following items for the charity 'Feed Up Warm Up':

- Carrier Bags
- Toilet Rolls
- Crisps
- Breakfast Bars
- Tinned Meals
- Baked Beans / Spaghetti Hoops
- Microwavable Rice
- Pasta
- Pasta Sauces

Please drop items into the library - thank you in advance!

If your child is **absent** from school for any reason, please inform the school daily by **9.15am**
 admin@wymondley.sch.herts.uk
 01438 354583

Only **emergency** appointments should be made during school time.



Click [HERE](#) for the extra-curricular **club timetable** for **after half term - pring Term 2**. Please make sure you sign your child up via Arbor for after school clubs.

	MONDAY	TUESDAY	WEDNESDAY	THURSDAY	FRIDAY
Morning 08:15-08:45					
Lunchtime 12:30-13:00	Sports Club (All Years) Mr Sinclair	Colouring/Craft Club (All Years) Mrs Payne	Sports Club (All Years) Mr Sinclair Card Trading Club (All Years) Mrs Chadwick		Ukulele Club (Years 1-6) Mrs Chadwick
After School 15:15-16:15	Sports Club (Years 3-6) Mr Sinclair	Choir Club (4pm finish) (Year 2-6) Mrs Chadwick	Sports Club (Reception & Year 1 & 2) Mr Sinclair	Homework Club (Eagles) Miss Linnert Blue Peter Club (Years 3-6) Miss Hudson & Miss Crowe	

LATEST NEWS

Click [HERE](#) for all the latest **community flyers**

Click [HERE](#) for all the latest **SEN & Wellbeing resources**



Friends of Wymondley



For FoW events, please book here: [PTA Events](#)

Coming up this **SPRING**

Find out more on our FB or IG pages

Feb

Activity

How to book

13th

Your Day

Express yourself - 50p an option
Pay for your choices on Arbor

Arbor

26th

Spring Disco

Party with your friends at our spring disco. £3.50 per person.
Book on PTA Events

PTA Events



28th

Family Paint with Me

Spend an afternoon with us and The Roaming Kiln and paint some pottery. Children of all ages welcome - parents too! £5pp plus pottery costs (on the day).
Saturday 2-4pm
Book at SumUp shop

SumUp Shop



Look out for our March calendar - coming soon!



SPRING DISCO

THURS 26th FEB

KS1 3.30pm-4.30pm £3.50 | BOOK AT PTA EVENTS
KS2 5pm - 6pm

Family paint with me

£5 PER PAINTER **14:00 - 16:00** **SATURDAY 28 FEB**

WYMONDLEY SCHOOL

SPEND SOME FAMILY TIME TOGETHER MAKING YOUR OWN MASTERPIECE!

→ Pottery items paid to The Roaming Kiln
♥ Food & Drinks Available to Buy



Puffins & Toucans



We have recently updated the **Amazon Wish List** for each of our classes at the school.

If you, a relative or a family friend, would like to purchase an item (or two!) in support of our school, please click on the relevant links:



Puffins click [HERE](#)

Toucans click [HERE](#)

Thank you in advance!

Week We Return

Monday

- Pancake Racing

Tuesday

- Author (Olaf Falafel) Visit

Wednesday

- PE (Puffins & Toucans)

Thursday

- Rocksteady Lessons
- Shared Reading (2.45pm)

Friday

- PE (Toucans)
- Sharing Assembly (2.45pm)



PE Days

- | | |
|---------|-------------|
| Puffins | • Wed |
| Toucans | • Wed & Fri |

Little Wandle resources can be found below.

This includes pure sounds to help support your children with learning to read at home.



<https://www.littlewandle.org.uk/resources/for-parents/>



Peacocks & Eagles



Wix Cup Semi Final v Samuel Lucas (A) - By Invite

Parents/Carers are asked to collect their children from school at 3pm to take to the venue for a 3.30pm kick off. You are warmly encouraged to stay and support.



We have recently updated the **Amazon Wish List** for each of our classes at the school.

If you, a relative or a family friend, would like to purchase an item (or two!) in support of our school, please click on the relevant links:



Peacocks click [HERE](#)

Eagles click [HERE](#)

Thank you in advance!

The **Peacocks** children have started to use **TTRS (Times Tables Rock Stars)**.

Please find a parent/carer guide on how to use this [HERE](#) and a short You Tube video [HERE](#)



Week We Return

Monday

- NO PE or Sports Club
- Pancake Racing

Tuesday

- Author (Olaf Falafel) Visit

Wednesday

- PE

Thursday

- PE (day swap)
- Rocksteady Lessons
- FoW Spring Disco

Friday

- Sharing Assembly (2.45pm)
- Wix Cup Semi Final (by invite)



PE Days

- | | |
|----------|-------------|
| Peacocks | • Mon & Wed |
| Eagles | • Mon & Wed |



Diary Dates



FEBRUARY

Saturday 28th

Family

- FoW Family Paint with Me

MARCH

Monday 2nd

Year 6

- Secondary Allocation Day

Tuesday 3rd

KS2 By Invite

- Football Match v St Andrews (H)

Thursday 5th

KS2 By Invite

- Friendly Football Match v William Ransom (A)

Friday 6th

All Years

- World Book Day

KS1 By Invite

- Dodgeball Event (@ St Ipployts)

Monday 9th

KS2 By Invite

- Football Match v Weston (H)

Thursday 12th

Year 6

- SATs Parent Info Evening (5.30-6.30pm)

Friday 13th

All Years

- FoW Someone Special Flowers

Monday 16th

All Years

- Living Eggs/Chicks Delivered

Thursday 19th & Friday 20th

All Years

- Book Fair

Thursday 26th

All Years

- Rocksteady Concert

Friday 27th

All Years

- Great Athletics Sports Event

All Years

- End of Term: School finishes at 1:30pm

All Years

- FoW Easter Trail & Bake Sale (1.30pm)

Monday 30th - Friday 10th

All Years

- ***EASTER HOLIDAYS***

APRIL

Monday 13th

All Years

- Silver Attendance Awards

Tuesday 14th

All Years

- Swimming Starts (Lesson 1)

Tuesday 21st

All Years

- Swimming (Lesson 2)

Tuesday 28th

All Years

- Swimming (Lesson 3)

MAY

Tuesday 5th

All Years

- Swimming (Lesson 4)

Monday 11th - Thursday 14th

Year 6

- SATs

Tuesday 12th

All Years

- Swimming (Lesson 5)

Tuesday 19th

All Years

- Swimming (Lesson 6)

Monday 25th - Friday 29th

All Years

- ***HALF TERM***



Diary Dates



JUNE

Tuesday 2 nd	Puffins	• Trip to Shepreth Wildlife Park TBC
Thursday 4 th	Year 6	• Youth Club Starts TBC
Monday 8 th	TBC	• Wymondley Woods
Tuesday 9 th	TBC	• Wymondley Woods
Wednesday 17 th	All Years	• Thank A Teacher Day
Friday 19 th	All Years	• Sports Day
	All Years	• FoW Fathers Day Gifts
Friday 26 th	All Years	• Reserve Sports Day

JULY

Wednesday 1 st - Friday 3 rd	Eagles	• PGL
Thursday 9 th	All Years	• Transition Day
Thursday 16 th	All Years	• Rocksteady Concert
	Puffins	• Graduation Ceremony (2-3.15pm)
	All Years	• End of Year Celebration (3.15-4.30pm)
Friday 17 th	Year 6	• Leavers Assembly (12.45-1.30pm)
	All Years	• End of Term: School finishes at 1.30pm

Monday 20th - Monday 31st Aug **All Years** • **SUMMER HOLIDAYS**



2025/2026 TERM DATES

Spring Term 2026

Monday 16th to Friday 20th February - Half Term
 Friday 27th March - End of Spring Term (1.30pm finish)
Monday 30th March - Friday 10th April - Easter Holidays

Summer Term 2026

Monday 13th April- Start of Summer Term
 Monday 4th May - BANK HOLIDAY
Monday 25th to Friday 29th May - Half Term
 Friday 17th July - End of Summer Term (1.30pm finish)
 Monday 20th July - Inset Day
 Tuesday 21st July - Inset Day
 Wednesday 22nd July - Inset Day
 Thursday 23rd July - Occasional Day



2026/2027 TERM DATES

Autumn Term 2026

Tuesday 1st September- Inset Day
 Wednesday 2nd September - Start of Autumn Term
Monday 26th to Friday 30th October - Half Term
 Friday 18th December - End of Autumn Term (1.30pm finish)

Spring Term 2027

Monday 4th January- Inset Day
 Tuesday 5th January - Start of Spring Term
Monday 15th to Friday 19th February - Half Term
 Thursday 25th March - End of Spring Term (1.30pm finish)
Friday 26th March - Friday 9th April - Easter Holidays



Summer Term 2027

Monday 12th April - Start of Summer Term
 Monday 3rd May- BANK HOLIDAY
Monday 31st May to Friday 4th June- Half Term
 Friday 16th July- End of Summer Term (1.30pm finish)
 Monday 19th July- Occasional Day
 Tuesday 20th July- Inset Day
 Wednesday 21st July - Inset Day
 Thursday 22nd July- Inset Day

